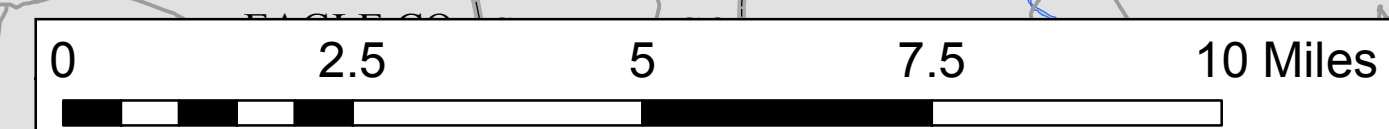
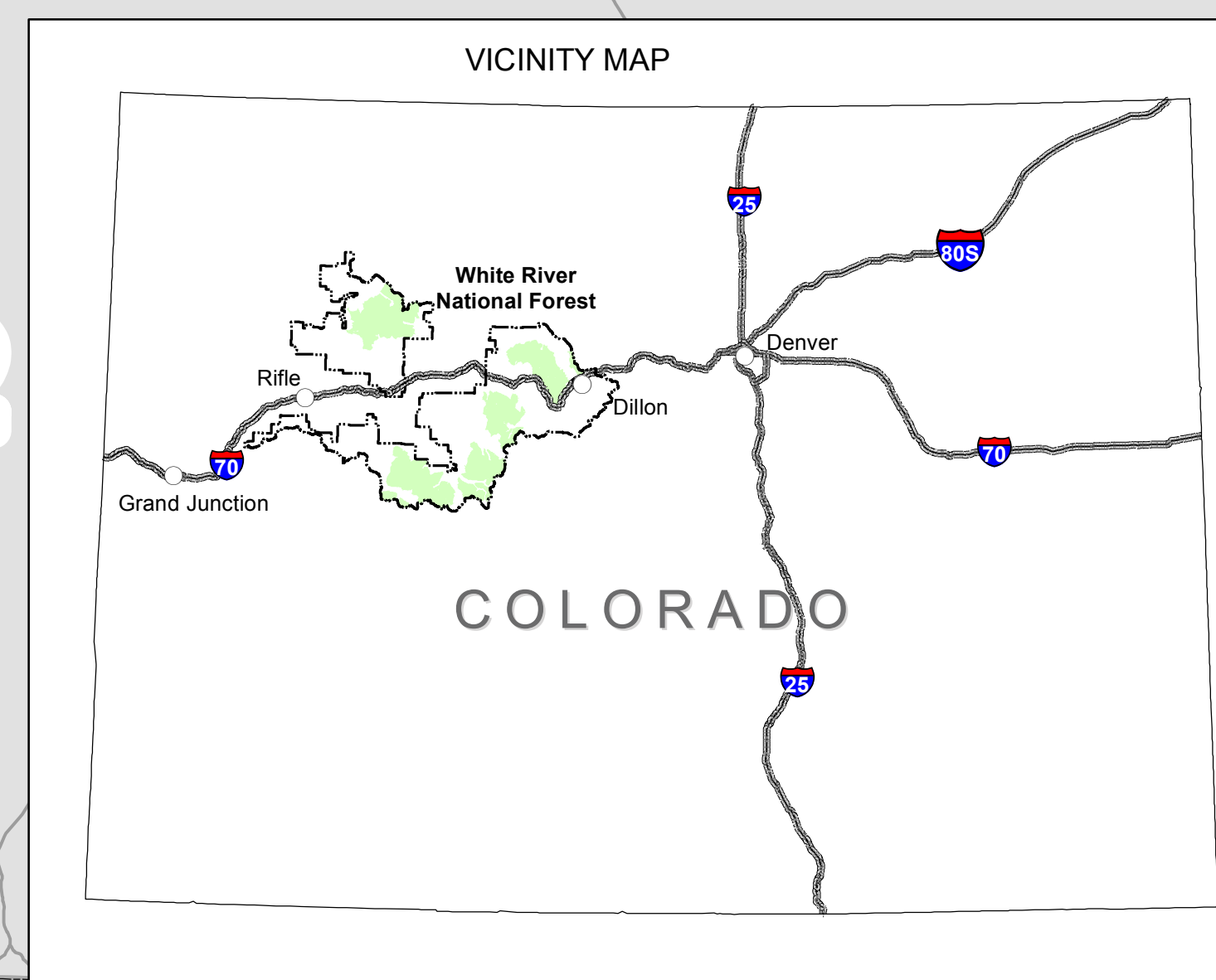


White River National Forest

Final Travel Management Plan

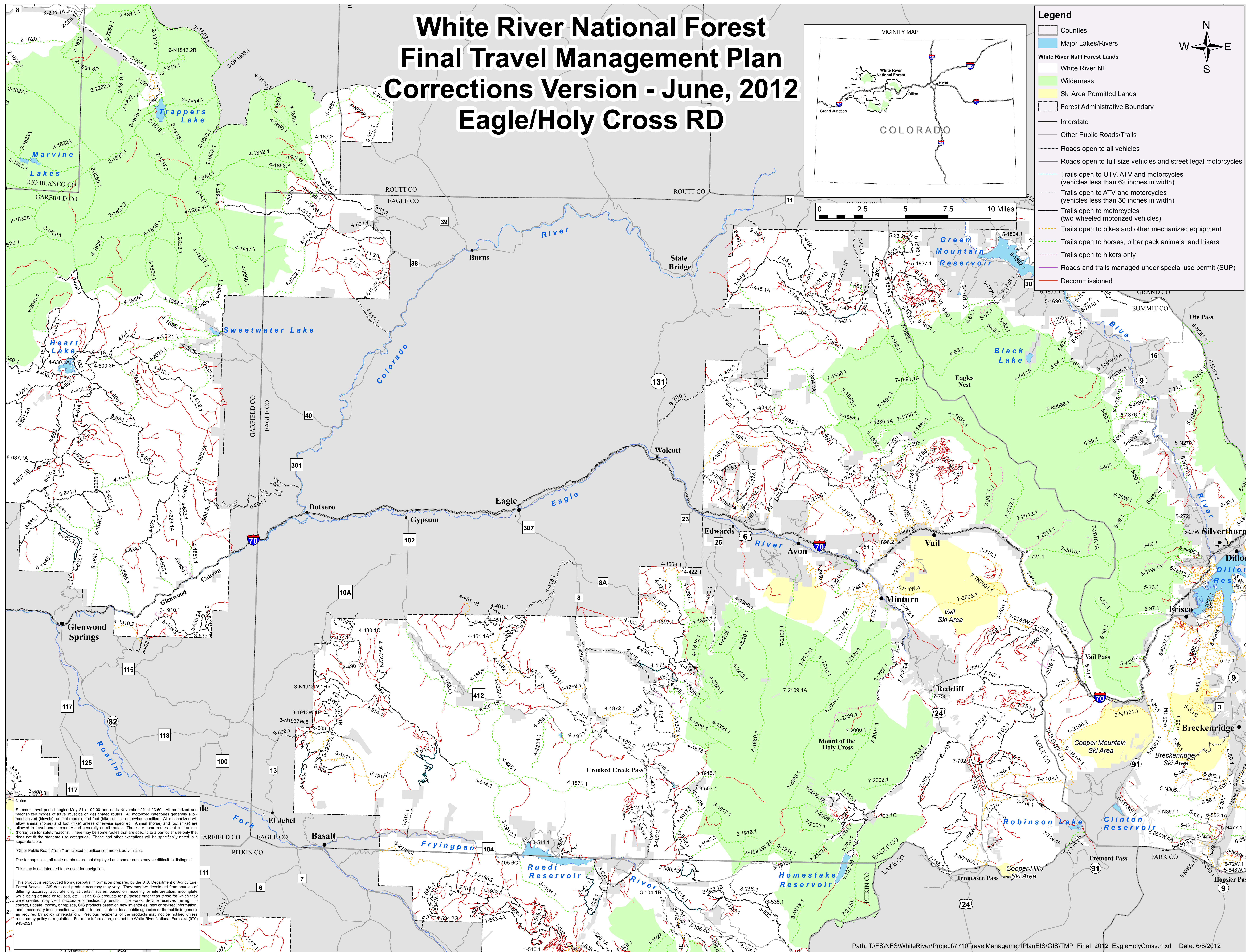
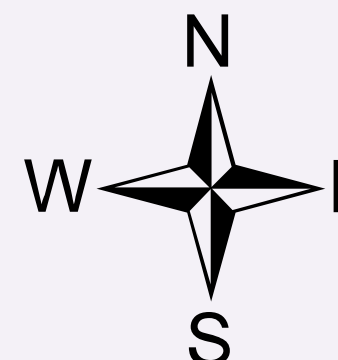
Corrections Version - June, 2012

Eagle/Holy Cross RD



Legend

- Counties
- Major Lakes/Rivers
- White River Nat'l Forest Lands
- Wilderness
- Ski Area Permitted Lands
- Forest Administrative Boundary
- Interstate
- Other Public Roads/Trails
- Roads open to all vehicles
- Roads open to full-size vehicles and street-legal motorcycles
- Trails open to UTV, ATV and motorcycles (vehicles less than 62 inches in width)
- Trails open to ATVs and motorcycles (vehicles less than 50 inches in width)
- Trails open to motorcycles (two-wheeled motorized vehicles)
- Trails open to bikes and other mechanized equipment
- Trails open to horses, other pack animals, and hikers
- Trails open to hikers only
- Roads and trails managed under special use permit (SUP)
- Decommissioned



Notes:

Summer travel period begins May 21 at 00:00 and ends November 22 at 23:59. All motorized and mechanized modes of travel must be on designated routes. All motorized categories generally allow mechanized (bicycle), animal (horse), and foot (hike) unless otherwise specified. All mechanized will allow animal (horse) and foot (hike) unless otherwise specified. Animal (horse) and foot (hike) are allowed to travel across country and generally on all routes. There are some routes that limit animal (horse) use for safety reasons. There may be some routes that are specific to a particular use only that does not fit the standard use categories. These and other exceptions will be specifically noted in a separate table.

Other Public Roads/Trails are closed to unlicensed motorized vehicles.

Due to map scale, all route numbers are not displayed and some routes may be difficult to distinguish. This map is not intended to be used for navigation.

This product is reproduced from geospatial information prepared by the U.S. Department of Agriculture, Forest Service. GIS data and product accuracy may vary. They may be developed from sources of differing accuracy, accurate only at certain scales, based on modeling or interpretation, incomplete while being created or revised, etc. Using GIS products for purposes other than those for which they were created, may yield inaccurate or misleading results. The Forest Service reserves the right to correct, update, modify or replace GIS products based on new inventories, new or revised information, and if necessary in conjunction with other federal, state or local public agencies or the public in general as required by policy or regulation. Previous recipients of the products may not be notified unless required by policy or regulation. For more information, contact the White River National Forest at (970) 945-2921.